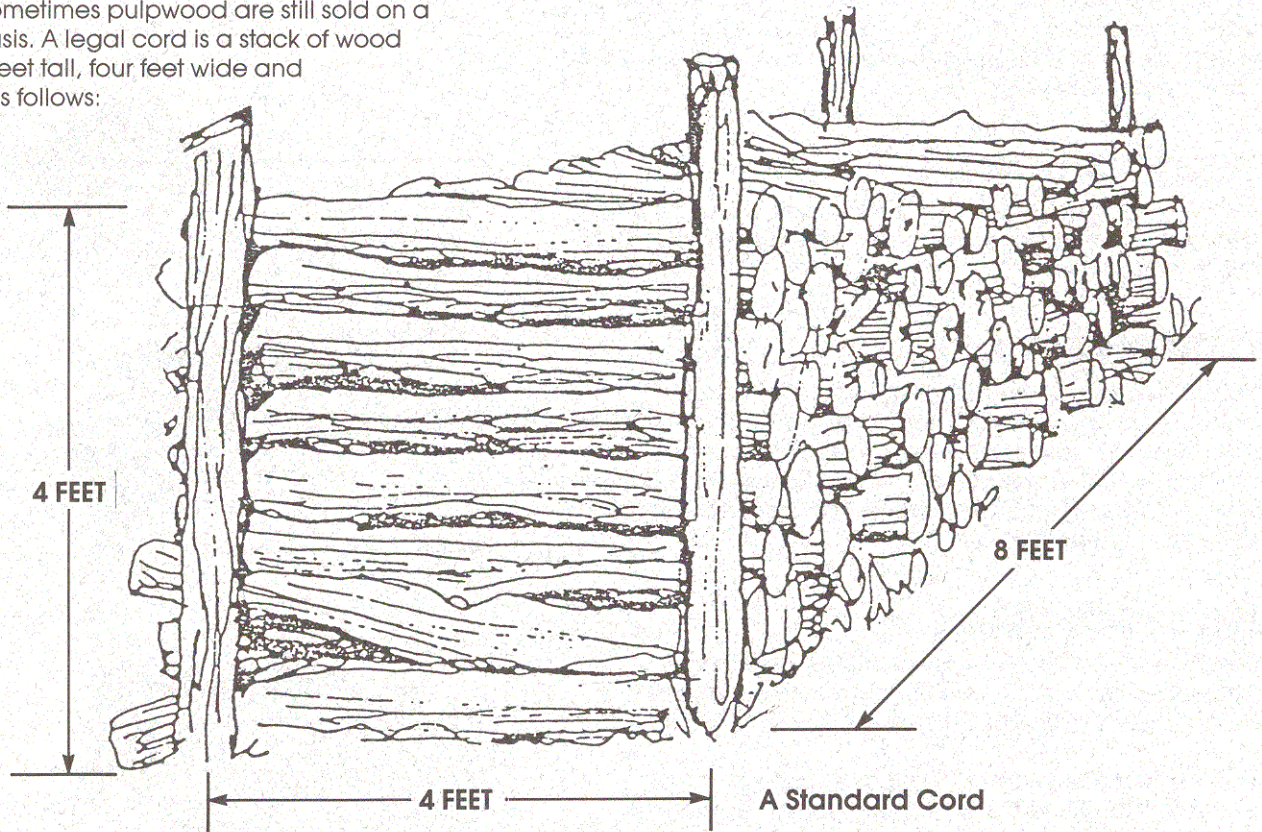




### STACKED WOOD (IMPERIAL MEASUREMENT)

#### CORDS

Firewood and sometimes pulpwood are still sold on a stacked cord basis. A legal cord is a stack of wood measuring four feet tall, four feet wide and eight feet long as follows:



The amount of space a cord occupies is  $4' \times 4' \times 8' = 128$  cubic feet. This volume is not all wood. Portions of it are air space and bark.

The volume of solid wood in a cord depends on many things: the size of the bolts, the amount of crook, proper trimming of limbs, species, the amount of bark, etc. Experience has shown that on the average a stacked cord of softwood has about 80 cubic feet of wood, while a stacked cord of hardwood about 70 cubic feet. Obviously, the cord is not an exact measure of volume. This sheet is intended as an aid only and does not take the place of an official scale.