



# Simplot Canada Batter Application Project Proposal

EAL # 2518r7



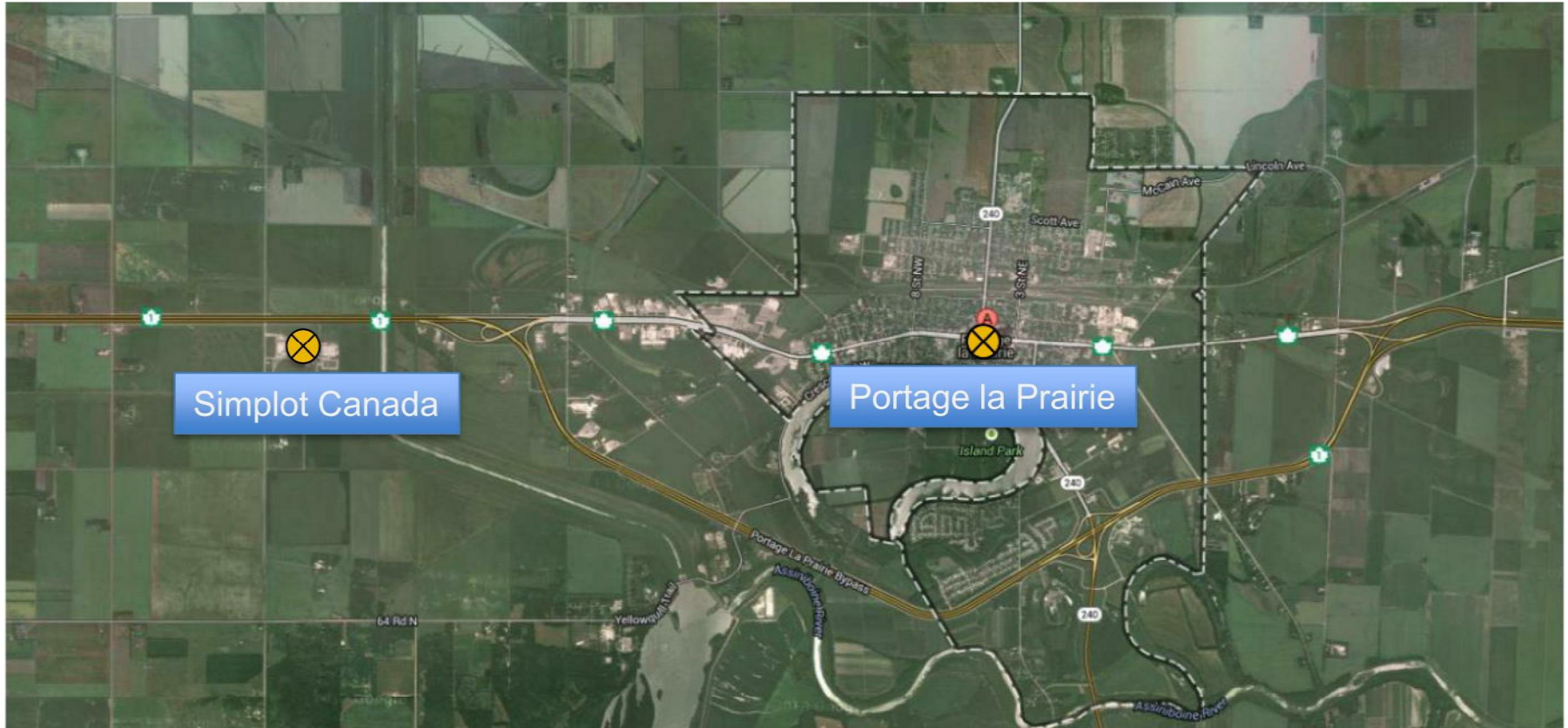
# Meeting Purpose

- Simplot Canada proposes to install a batter coating system and associated equipment to meet increasing market demand for battered potato products.
- In Manitoba, any alteration to the operation of a licensed facility requires prior authorization by the Environmental Approvals Branch of Manitoba Conservation and Water Stewardship and as part of this process there is a public engagement component of the Notice Of Alteration.
- Simplot Canada appreciates the opportunity to discuss the proposed batter project with public stakeholders and seeks feedback on the information required to support the NOA decision making process.

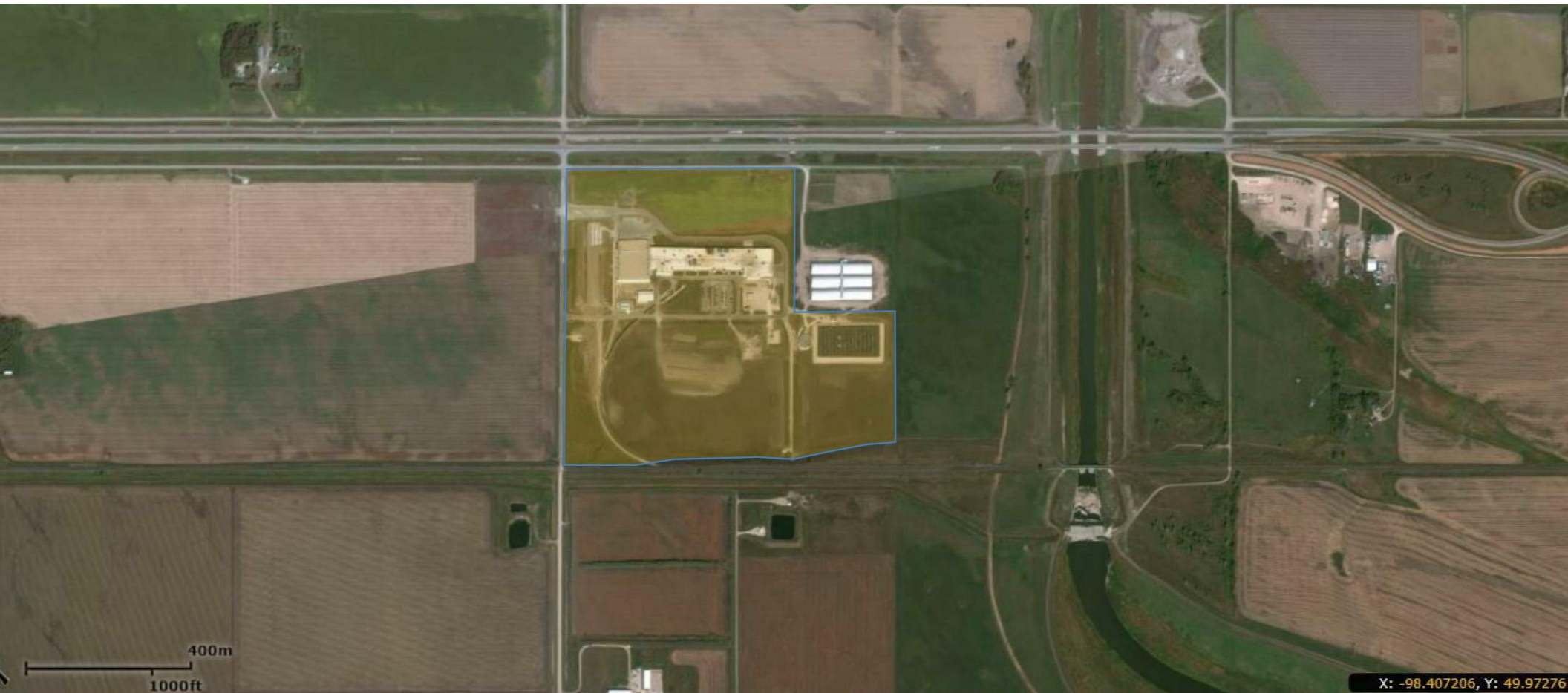
# Simplot Canada II Overview

- Potato processing plant located in Portage la Prairie, Manitoba.
- The plant began operations in 2003 and employs over 200 employees.
- Current annual production capacity of more than 300 million pounds of frozen french fries and formed potato products.
- Products are distributed to large quick-service-restaurant chains and other food service customers in the East, Southeast, and Midwestern United States.
- Manitoba Environment Act Class I Development (EAL #2518r7).

# Plant Location



# Plant Location

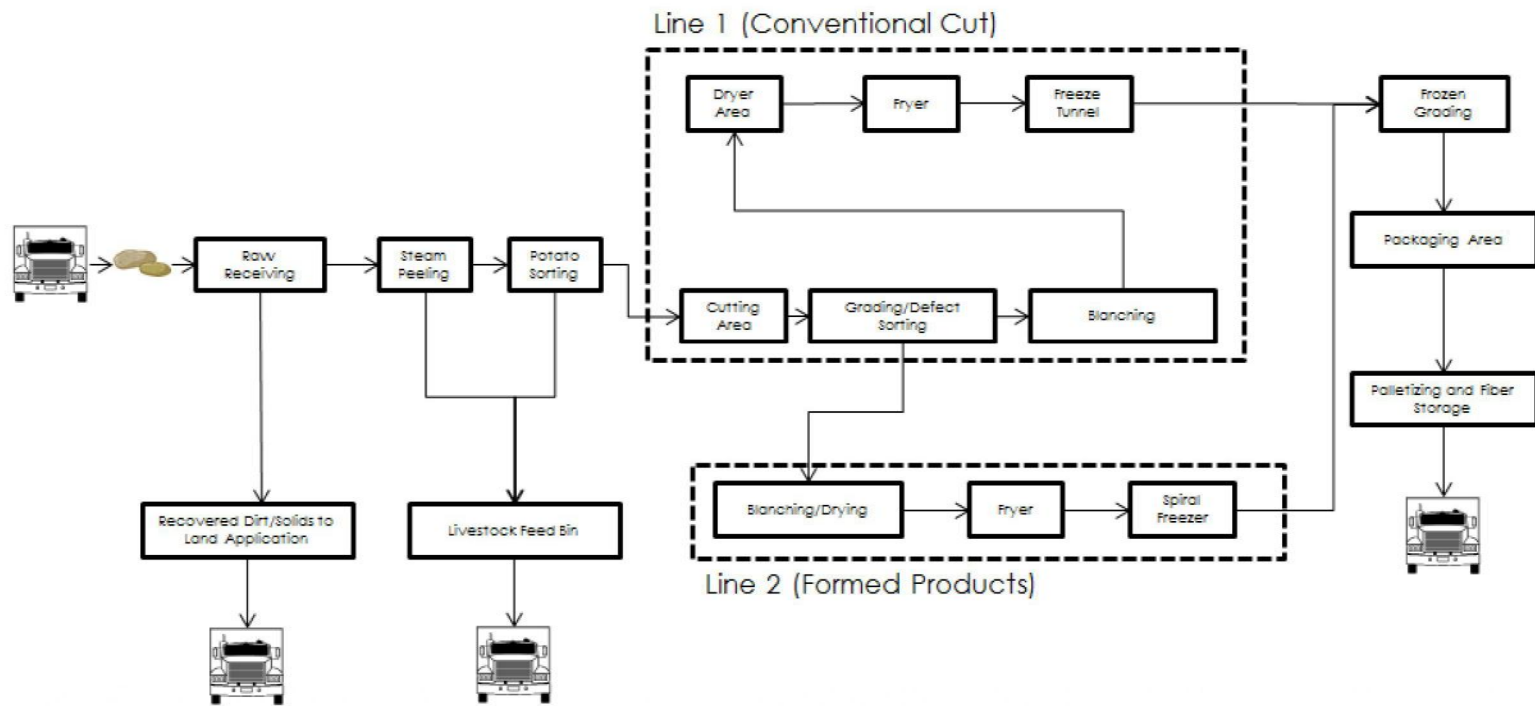




## Existing Facility

- Processes apx. 1.7 MMlbs of raw potatoes per day.
- Produces apx. 1.0 MMlbs frozen french fries & 100,000 lbs of formed product per day.
- Operates apx. 300 days/year – 24 hours/day.
- 215,000 ft<sup>2</sup> production plant and 21 MMlb frozen warehouse.
- Situated on 125 acre greenfield development in Poplar Bluff Industrial Park (RM/City of Portage la Prairie).
- Class III industrial wastewater pretreatment facility with discharge to City of Portage WPCF.

# Existing Facility Process Flow Diagram





## Environmental Monitoring (Fryer Process Related)

- Air Emissions:
  - Daily highway conditions monitoring and traffic signaling (winter)
  - Annual NPRI – CAC review & reporting (PM<sub>10</sub>, PM<sub>2.5</sub>)
  - Steam, water & natural gas use metering (daily)
- Wastewater:
  - Digester operations & monitoring (wastewater quality, biogas production, oil accumulation)

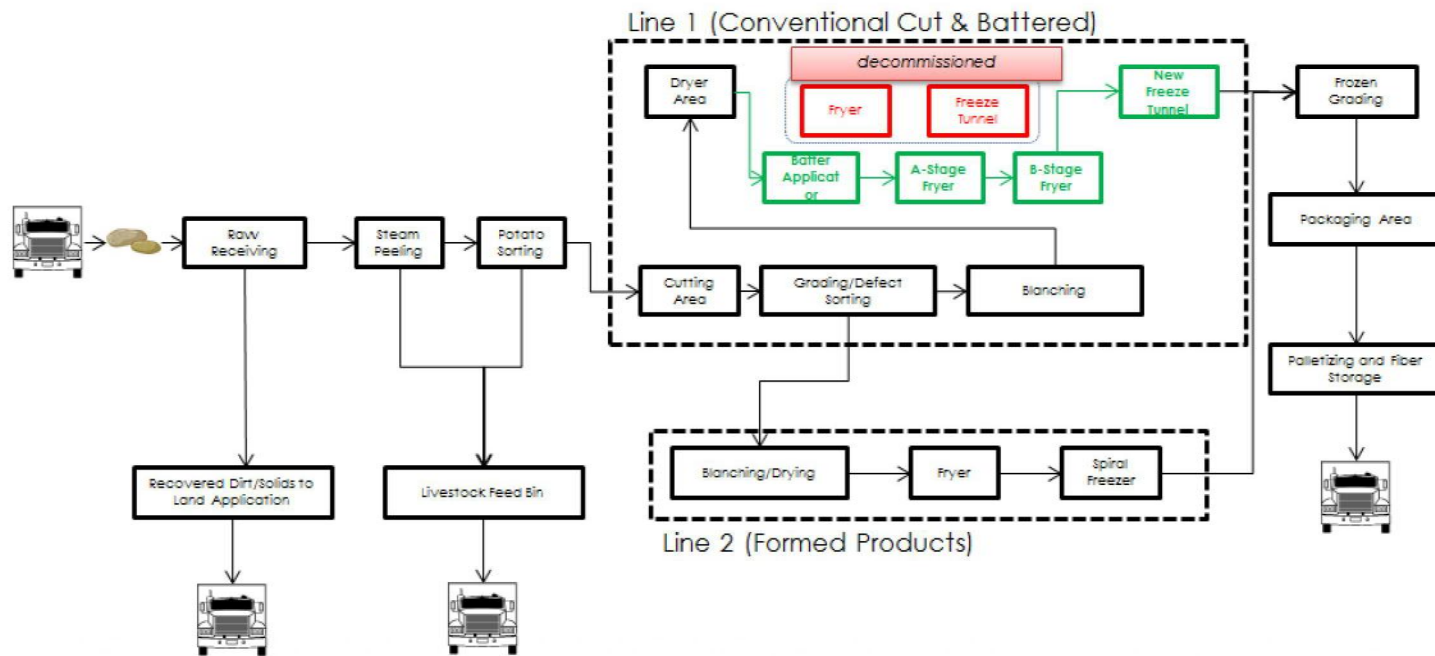
## New Project: Batter Application Process

- Install batter application system and associated equipment capable of producing battered potato products.
- Battered products anticipated to represent 20% of annual product mix after installation.
- Future expectations of possible 50% of annual product mix.
- No additional labour is expected as part of this project.

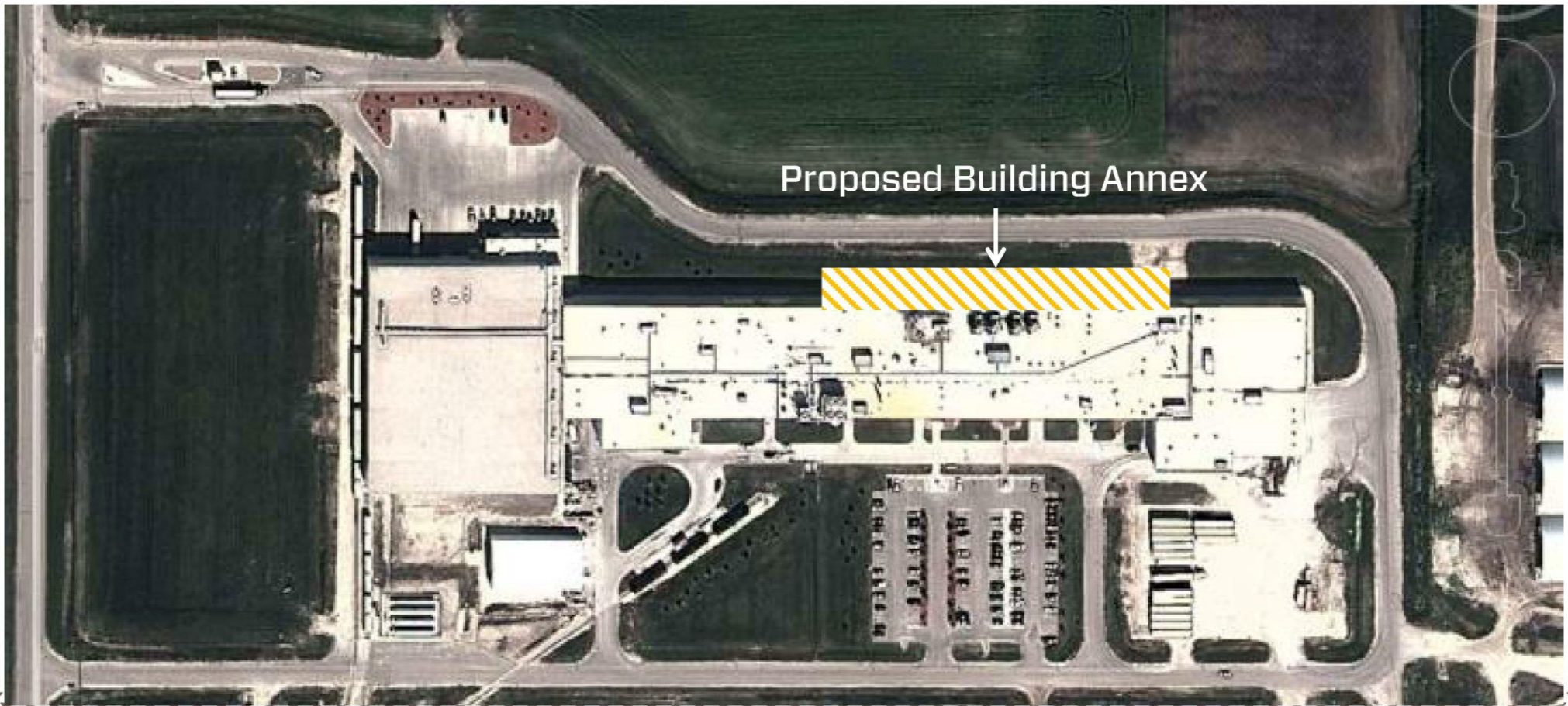
# Batter Application Process



# Modified Facility Process Flow Diagram



# Plant Location



# Environmental Review Process

- Simplot has contracted AECOM to support environmental review and development of NOA Submission.
- Areas of environmental impact to be included in review process:
  - Air emissions, water use, energy use, stormwater, waste materials, coproducts, traffic, noise, odours, and wastewater treatment processes.
  - Review will contrast current operating conditions with expected impacts post fry plant modification.

## Desired Project/NOA Review Schedule

| <u>Task</u>                                    | <u>Deadline</u> |
|------------------------------------------------|-----------------|
| • Project review meeting with CWS              | April 7         |
| • Draft NOA submission review meeting with CWS | June 9/10       |
| • Submission of NOA to CWS for review          | June 15         |
| • CWS Project Approval                         | August 1        |
| • Simplot initiate construction                | August 2        |
| • Simplot construction complete                | March 2016      |
| • Project commissioning                        | April 2016      |



**QUESTIONS?**

