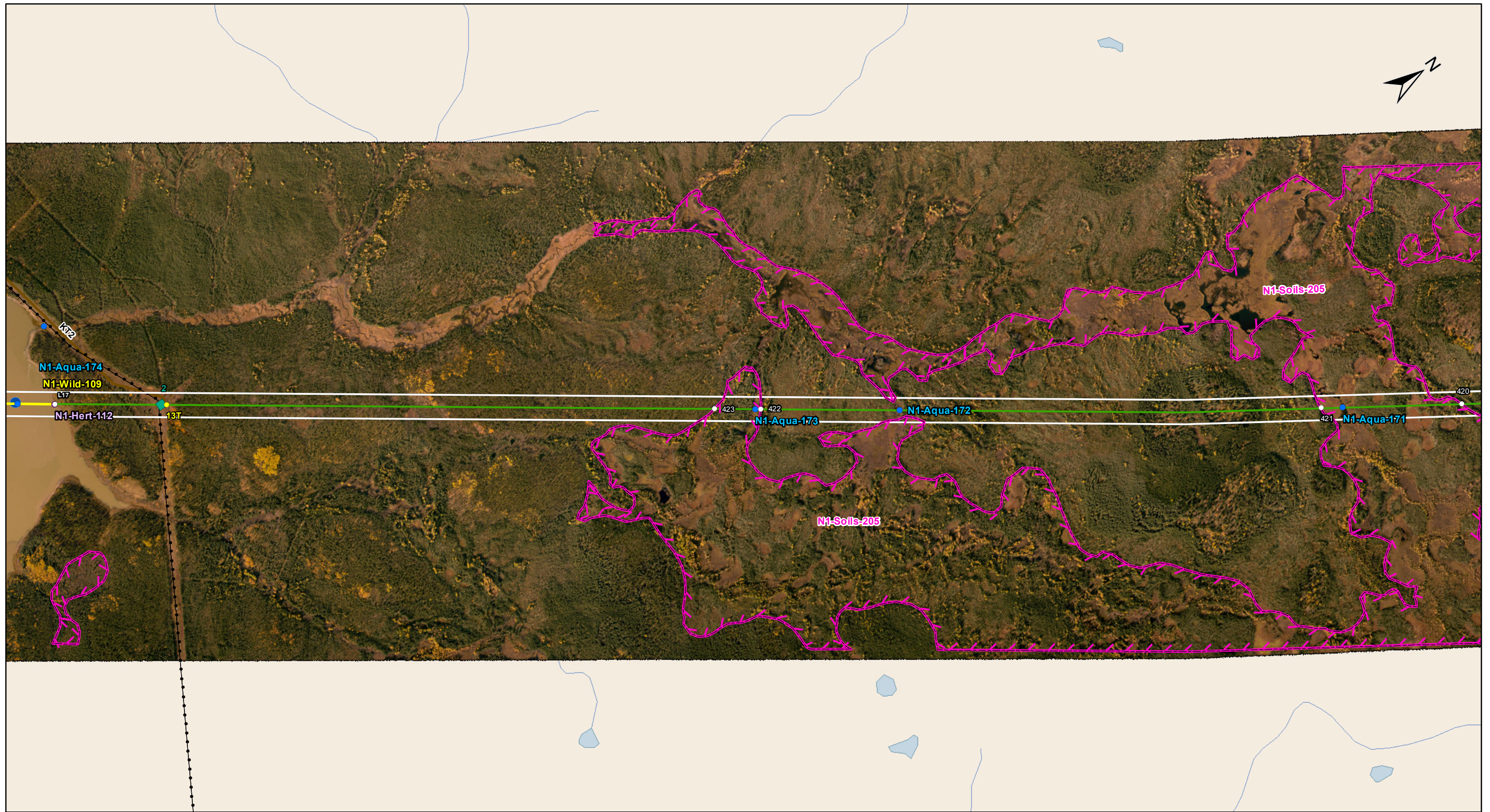


DOCUMENT PATH: G:_GIS_PROJECT_FOLDER\11440054_BPIII_EPP\ARCMAPIESS_N1\BPIII_CENVPP_N1N2N3N4C1\SECTIONBASEMAP_MAPBOOK_BTIB_STANTEC_20131207.MXD



Coordinate System: UTM Zone 14N NAD83
 Data Source: MB Hydro, ProvMB, NRCAN
 Date Created: December 09, 2013

0 120 240 480
 Metres
 1:10,000

Land Base

- Transmission Line
- Highway
- Major Road
- Local Road
- Winter Road
- Railway (Operational)
- Railway (Discontinued)
- Mining

Project Infrastructure

- Angle Tower Locations
- BPIII Final Preferred Route
- 66 m Right of Way

Points of Access*

- Proposed Access Point
- Major Stream Crossing
- Abandoned Rail Crossing
- Rail Crossing
- Transmission Line Crossing
- Proposed Access Route

*Labels correspond to BPIII Access Management Database

ESS Features

- Heritage
- Water
- Wildlife
- Soils and Terrain
- Permafrost

Bipole III Transmission Project Construction Environmental Protection Plan Construction Section N1 Environmentally Sensitive Site Locations

MAP NUMBER : 60

ESS Group : Archaeological

| Sec-Seg ID | ESS ID | ESS Name | Easting | Northing | UTM Zone |
|------------|-------------|-----------------|---------|----------|----------|
| N1-S31 | N1-Hert-112 | Burntwood River | 616252 | 6206823 | 14N |

Potential Effects:

Potential disturbance to Heritage Resources

Specific Mitigation:

- Carry out construction activities on frozen or dry ground to minimize surface damage, rutting and erosion
- Identify and flag prior to start of work
- Conduct site investigation with Archaeologist post clearing and prior to construction
- Minimize surface disturbance around the site to the extent possible
- Inspect excavated materials or surface disturbance for heritage resources and report any finds to Environmental Inspector
- Implement additional mitigation from site investigation

ESS Group : Water Crossing

| Sec-Seg ID | ESS ID | ESS Name | Easting | Northing | UTM Zone | Channel Width | Wet Width | Fish Habitat Class | Habitat Sensitivity |
|------------|-------------|--------------------------------------|---------|----------|----------|---------------|-----------|--------------------|---------------------|
| N1-S31 | N1-Aqua-171 | Unnamed Tributary of Burntwood River | 618241 | 6209693 | 14N | 12.8m | 12.8m | Moderate | Marginal |
| N1-S31 | N1-Aqua-172 | Unnamed Tributary of Burntwood River | 617565 | 6208700 | 14N | 23.4m | N/A | Low | Marginal |

Potential Effects:

Habitat loss & contamination from structure foundations & installations; increased erosion & sedimentation of streams; damage to stream banks; loss of riparian vegetation; fish habitat disturbance & impeded fish movement; rutting of floodplain

Specific Mitigation:

- Carry out construction activities on frozen ground to minimize surface damage, rutting and erosion
- Use existing trails, roads or cut lines whenever possible as access routes
- Identify and flag buffer areas prior to start of work
- Riparian Buffers shall be a minimum of 30m and increase in size based on slope of land entering waterway. Within these buffers shrub and herbaceous understory veg will be maintained along with trees that do not violate MH Veg Clearance Requirements
- 7m no machine zone will restrict equipment in close proximity to the waterbody except at the trail crossing
- Adhere to Department of Fisheries and Oceans (DFO) Operational Statements for Temporary Stream Crossings, Ice Bridges and Snow Fills, and Overhead Line Construction
- No instream works or fording from April 15 - July 15

ESS Group : Water Crossing

| Sec-Seg ID | ESS ID | ESS Name | Easting | Northing | UTM Zone | Channel Width | Wet Width | Fish Habitat Class | Habitat Sensitivity |
|------------|-------------|--------------------------------------|---------|----------|----------|---------------|-----------|--------------------|---------------------|
| N1-S31 | N1-Aqua-173 | Unnamed Tributary of Burntwood River | 617341 | 6208379 | 14N | N/A | N/A | Low | No Fish Habitat |

Potential Effects:

Habitat loss & contamination from structure foundations & installations; increased erosion & sedimentation of streams; damage to stream banks; loss of riparian vegetation

Specific Mitigation:

- Carry out construction activities on frozen ground to minimize surface damage, rutting and erosion
- Use existing trails, roads or cut lines whenever possible as access routes
- Identify and flag buffer areas prior to start of work
- Riparian Buffers shall be a minimum of 30m and increase in size based on slope of land entering waterway. Within these buffers shrub and herbaceous understory veg will be maintained along with trees that do not violate MH Veg Clearance Requirements
- 7m no machine zone will restrict equipment in close proximity to the waterbody except at the trail crossing
- Adhere to Department of Fisheries and Oceans (DFO) Operational Statements for Temporary Stream Crossings, Ice Bridges and Snow Fills, and Overhead Line Construction

ESS Group : Water Crossing

| Sec-Seg ID | ESS ID | ESS Name | Easting | Northing | UTM Zone | Channel Width | Wet Width | Fish Habitat Class | Habitat Sensitivity |
|------------|-------------|-----------------|---------|----------|----------|---------------|-----------|--------------------|---------------------|
| N1-S31 | N1-Aqua-174 | Burntwood River | 616194 | 6206740 | 14N | 100m | N/A | High | Important |

Potential Effects:

Habitat loss & contamination from structure foundations & installations; increased erosion & sedimentation of streams; damage to stream banks; loss of riparian vegetation; fish habitat disturbance & impeded fish movement

Specific Mitigation:

- Carry out construction activities on frozen ground to minimize surface damage, rutting and erosion
- Use existing trails, roads or cut lines whenever possible as access routes
- Identify and flag buffer areas prior to start of work
- Riparian Buffers shall be a minimum of 30m and increase in size based on slope of land entering waterway. Within these buffers shrub and herbaceous understory veg will be maintained along with trees that do not violate MH Veg Clearance Requirements
- 7m no machine zone will restrict equipment in close proximity to the waterbody except at the trail crossing
- Adhere to Department of Fisheries and Oceans (DFO) Operational Statements for Temporary Stream Crossings, Ice Bridges and Snow Fills, and Overhead Line Construction
- No instream works or fording from September 1 - July 15

MAP NUMBER : 60 cont'd

ESS Group : Birds and Habitat

| Sec-Seg ID | ESS ID | ESS Name | Location | Start | Stop | UTM Zone | Distance |
|------------|-------------|---|------------------|-------------------------|-------------------------|----------|----------|
| N1-S31 | N1-Wild-109 | Burntwood River; movement route for raptors and waterfowl | Site: L17 to L18 | E- 616252 N- 6206822 | E- 616114 N- 6206625 | 14N | 240 m |

Potential Effects:

Higher risk of wire collision, risk of wire collision is localized to the right-of-way

Specific Mitigation:

- Adhere to reduced risk timing windows for protection of birds (August 1- April 30)
- Maintain setback during timing window
- Conduct priority assessment for bird diverters and other measures prior to transmission line stringing
- Install bird diverters or other measures at high priority sites

ESS Group : Permafrost

| Sec-Seg ID | ESS ID | ESS Name | Location | Start | Stop | UTM Zone | Distance |
|------------|--------------|------------|------------------|-----------------------|-----------------------|----------|----------|
| N1-S31 | N1-Soils-205 | Permafrost | Site: 420 to 421 | E-618416 N-6209963 | E-618208 N-6209642 | 14N | 382 m |
| N1-S31 | N1-Soils-205 | Permafrost | Site: 422 to 421 | E-617349 N-6208390 | E-617277 N-6208288 | 14N | 126 m |

Potential Effects:

Melting or loss of permafrost due to disturbance of the active layer

Specific Mitigation:

- Carry out construction activities on frozen ground to minimize surface damage and rutting
- Use existing trails, roads or cut lines whenever possible as access routes
- Avoid organic soils containing permafrost to the extent possible
- Maintain shrub and herbaceous vegetation to the extent possible
- Remove trees by low-disturbance methods
- Confine vehicle traffic to established trails to the extent possible
- Implement erosion protection before commencing construction in accordance with Erosion/Sediment Control Plan

This page is intentionally left blank.

DOCUMENT PATH: G:\GIS_PROJECT_FOLDER011440054_BPIII_EPP\ARCMAPIESS_N1\BPIII_CENVPP_N1N2\N4C1\SECTIONBASEMAP_MAPBOOK_BTIB_STANTEC_20131207.MXD



Coordinate System: UTM Zone 14N NAD83
 Data Source: MB Hydro, ProvMB, NRCAN
 Date Created: December 09, 2013

0 120 240 480
 Metres
 1:10,000

- Land Base**
- Transmission Line
 - Highway
 - Major Road
 - Local Road
 - Winter Road
 - Railway (Operational)
 - Railway (Discontinued)
 - Mining

- Project Infrastructure**
- Angle Tower Locations
 - BPIII Final Preferred Route
 - 66 m Right of Way

- Points of Access***
- Proposed Access Point
 - Major Stream Crossing
 - Abandoned Rail Crossing
 - Rail Crossing
 - Transmission Line Crossing
 - Proposed Access Route
- *Labels correspond to BPIII Access Management Database

- ESS Features**
- Heritage**
 - Archaeological
 - Water**
 - Water Crossing
 - Wildlife**
 - Birds and Habitat
 - Soils and Terrain**
 - Permafrost

**Bipole III Transmission Project
 Construction Environmental Protection Plan
 Construction Section N1
 Environmentally Sensitive Site Locations**

MAP NUMBER : 61

ESS Group : Archaeological

| Sec-Seg ID | ESS ID | ESS Name | Easting | Northing | UTM Zone |
|------------|-------------|-----------------|---------|----------|----------|
| N1-S31 | N1-Hert-113 | Burntwood River | 616113 | 6206625 | 14N |

Potential Effects:

Potential disturbance to Heritage Resources

Specific Mitigation:

- Carry out construction activities on frozen or dry ground to minimize surface damage, rutting and erosion
- Identify and flag prior to start of work
- Conduct site investigation with Archaeologist post clearing and prior to construction
- Minimize surface disturbance around the site to the extent possible
- Inspect excavated materials or surface disturbance for heritage resources and report any finds to Environmental Inspector
- Implement additional mitigation from site investigation

ESS Group : Water Crossing

| Sec-Seg ID | ESS ID | ESS Name | Easting | Northing | UTM Zone | Channel Width | Wet Width | Fish Habitat Class | Habitat Sensitivity |
|------------|-------------|-----------------|---------|----------|----------|---------------|-----------|--------------------|---------------------|
| N1-S31 | N1-Aqua-174 | Burntwood River | 616194 | 6206740 | 14N | 100m | N/A | High | Important |

Potential Effects:

Habitat loss & contamination from structure foundations & installations; increased erosion & sedimentation of streams; damage to stream banks; loss of riparian vegetation; fish habitat disturbance & impeded fish movement

Specific Mitigation:

- Carry out construction activities on frozen ground to minimize surface damage, rutting and erosion
- Use existing trails, roads or cut lines whenever possible as access routes
- Identify and flag buffer areas prior to start of work
- Riparian Buffers shall be a minimum of 30m and increase in size based on slope of land entering waterway. Within these buffers shrub and herbaceous understory veg will be maintained along with trees that do not violate MH Veg Clearance Requirements
- 7m no machine zone will restrict equipment in close proximity to the waterbody except at the trail crossing
- Adhere to Department of Fisheries and Oceans (DFO) Operational Statements for Temporary Stream Crossings, Ice Bridges and Snow Fills, and Overhead Line Construction
- No instream works or fording from September 1 - July 15

ESS Group : Birds and Habitat

| Sec-Seg ID | ESS ID | ESS Name | Location | Start | Stop | UTM Zone | Distance |
|------------|-------------|---|------------------|-------------------------|-------------------------|----------|----------|
| N1-S31 | N1-Wild-109 | Burntwood River; movement route for raptors and waterfowl | Site: L17 to L18 | E- 616252 N- 6206822 | E- 616114 N- 6206625 | 14N | 240 m |

Potential Effects:

Higher risk of wire collision, risk of wire collision is localized to the right-of-way

Specific Mitigation:

- Adhere to reduced risk timing windows for protection of birds (August 1- April 30)
- Maintain setback during timing window
- Conduct priority assessment for bird diverters and other measures prior to transmission line stringing
- Install bird diverters or other measures at high priority sites