

This drawing has been prepared for the use of AECOM's client and may not be used, reproduced or relied upon by third parties, except as agreed by AECOM and its client, as required by law or for use by governmental reviewing agencies. AECOM accepts no responsibility, and denies any liability whatsoever, to any party that modifies this drawing without AECOM's express written consent. Do not scale this document. All measurements must be obtained from stated dimensions.

**PLAN**  
SCALE: NTS

**LEGEND**  
★ LALOR MINE

Hudson Bay Mining and Smelting Co., Limited  
Lalor Mine Environment Act Proposal

**General Site Location**

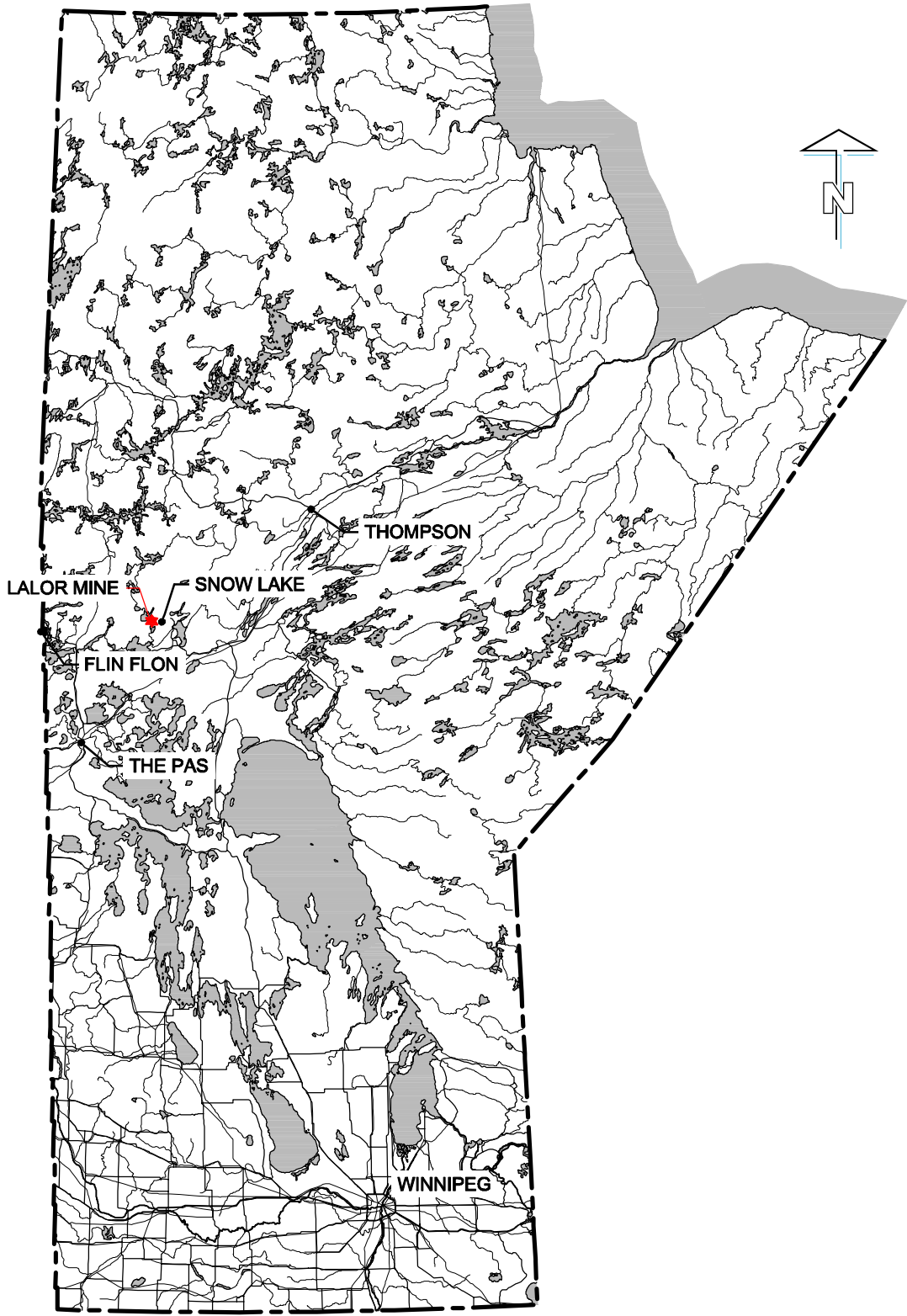
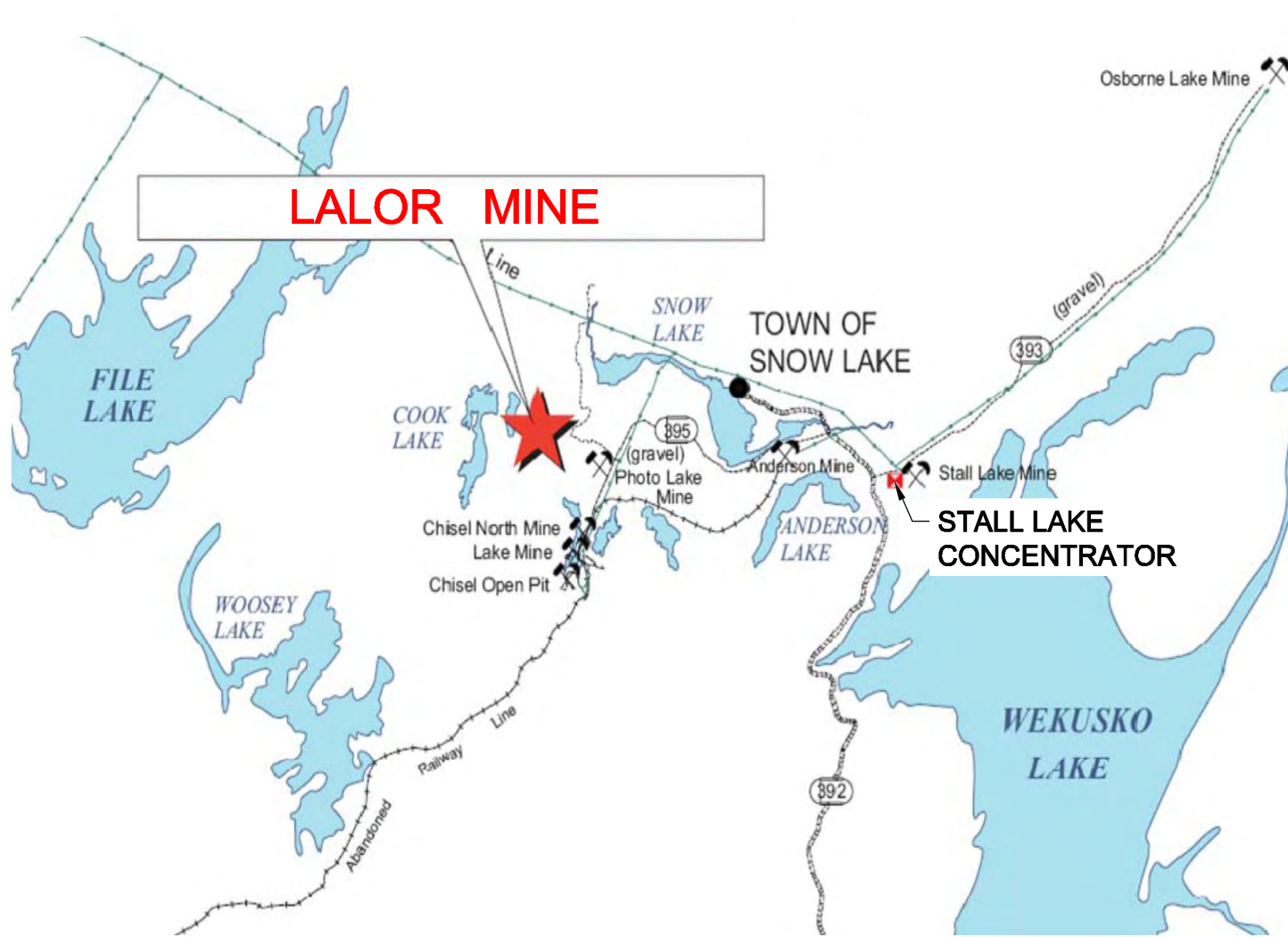


Figure - 01

This drawing has been prepared for the use of AECOM's client and may not be used, reproduced or relied upon by third parties, except as agreed by AECOM and its client, as required by law or for use by governmental reviewing agencies. AECOM accepts no responsibility, and denies any liability whatsoever, to any party that modifies this drawing without AECOM's express written consent. Do not scale this document. All measurements must be obtained from stated dimensions.



SCALE: NTS

Hudson Bay Mining and Smelting Co., Limited  
Lalor Mine Environment Act Proposal

### HBMS Mines in the Snow Lake Area



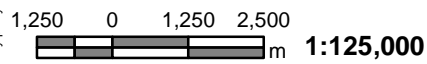
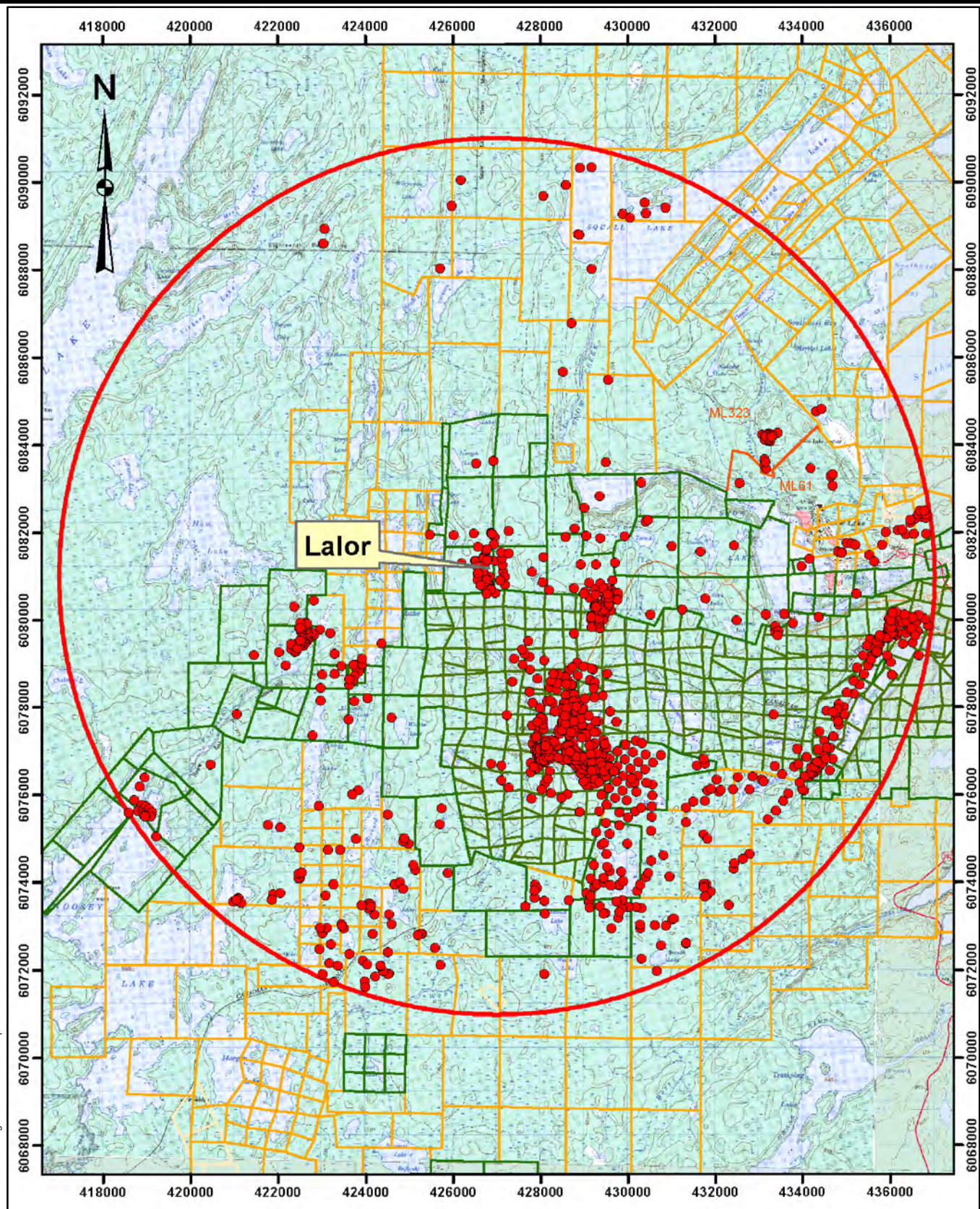
Figure - 02

A SIZE 8.5" x 11" (215.9mm x 279.4mm)

PLOT: 12/04/23 11:05:33 AM

SAVED BY: c1oustonec

ISS/REV: —  
AECOM FILE NAME: GIS-2012-04-23-DrillHoles-60212403  
This drawing has been prepared for the use of AECOM's client and may not be used, reproduced or relied upon by third parties, except as agreed by AECOM and its client, as required by law or for use by governmental reviewing agencies. AECOM accepts no responsibility, and denies any liability whatsoever, to any party that modifies this drawing without AECOM's express written consent. Do not scale this document. All measurements must be obtained from stated dimensions.



Projection: UTM Zone 14U  
 Datum: CSRS NAD83  
 Source: HBMS

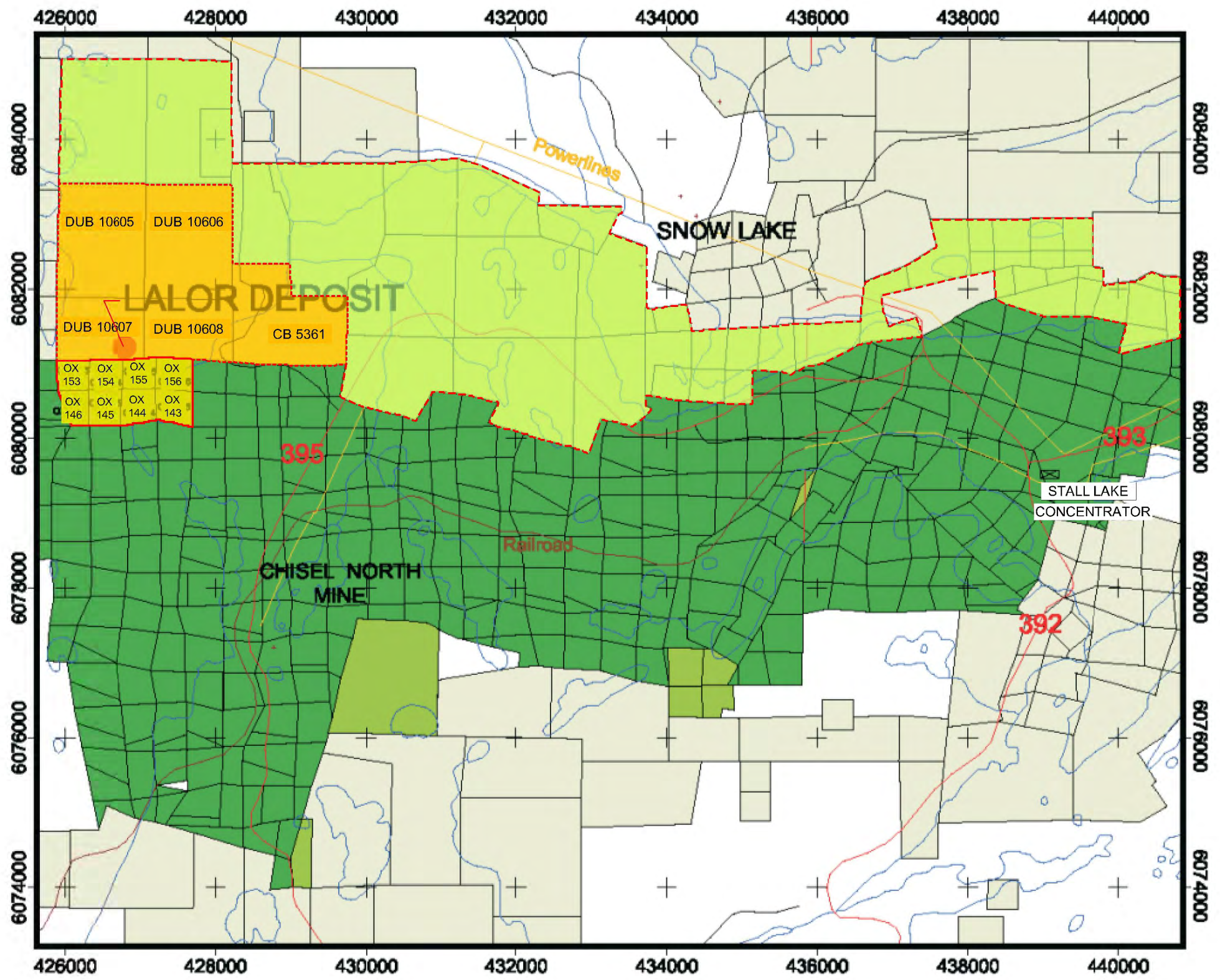
- Legend**
- Lalor/Chisel Drillholes
  - 10 km Radius

**Hudson Bay Mining and Smelting Co., Limited  
 Lalor Mine Environment Act Proposal**

**Drill Hole Locations (Since 1955)  
 Figure - 03**



This drawing has been prepared for the use of AECOM's client and may not be used, reproduced or relied upon by third parties, except as agreed by AECOM and its client, as required by law or for use by governmental reviewing agencies. AECOM accepts no responsibility, and denies any liability whatsoever, to any party that modifies this drawing without AECOM's express written consent. Do not scale this document. All measurements must be obtained from scaled dimensions.



**LEGEND**

- 63k16
- Highway
  - Rivers
  - Lakes
  - Powerlines
  - Trails
  - Road
  - Snow Lake Concentrator
  - Lalor Claims
  - HBMS Mineral Leases (Lalor)
  - HBED Claims
  - HBMS Claims
  - HBMS Mineral Leases
  - Other Claims

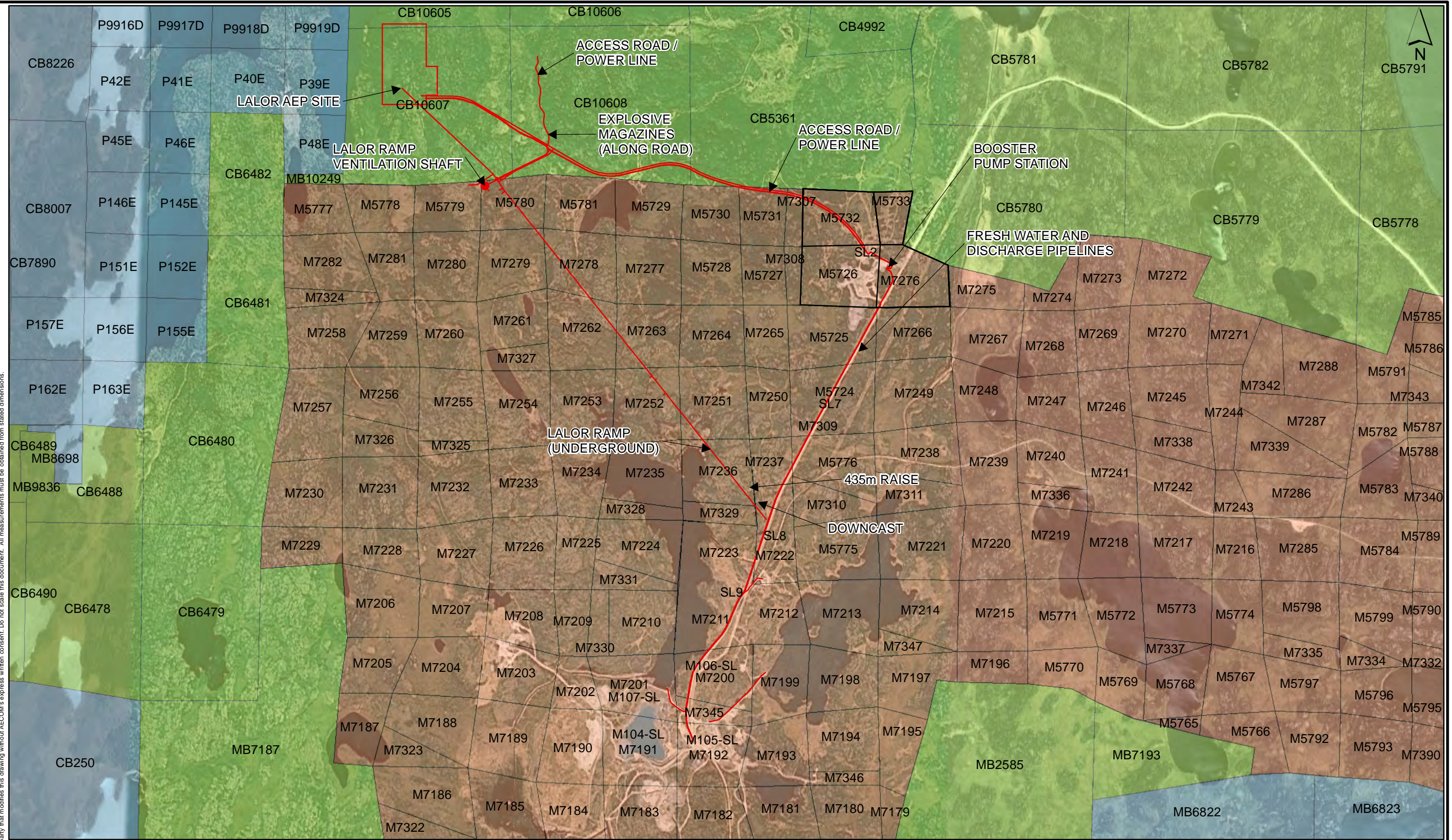
SCALE: NTS

Hudson Bay Mining and Smelting Co., Limited  
 Lalor Mine Environment Act Proposal

**Lalor Mine Mineral Claims and Leases**



A SIZE 8.5" x 11" (215.9mm x 279.4mm)  
 PLOT: 12/04/23 1:58:23 PM  
 SAVED BY: cloustonec  
 ISS/REV: AECOM FILE NAME: GIS-2012-03-26-MineMineralClaims-60212403  
 This drawing has been prepared for the use of AECOM's client and may not be used, reproduced or relied upon by third parties, except as agreed by AECOM and its client, as required by law or for use by governmental reviewing agencies. AECOM accepts no responsibility, and denies any liability whatsoever, to any party that modifies this drawing without AECOM's express written consent. All measurements must be obtained from stated dimensions.



250 0 250 500  
 m  
 Projection: UTM Zone 14U  
 Datum: CSRS NAD83

1:25,000

**Legend**

— PROPOSED LALOR MINE

**Mineral Leases**

— HUDSON BAY MINING AND SMELTING CO., LIMITED

**Mineral Claims**

- HUDSON BAY EXPLORATION AND DEVELOPMENT COMPANY LIMITED
- HUDSON BAY MINING AND SMELTING CO., LIMITED
- OTHER

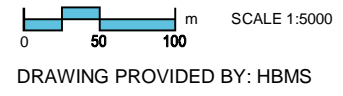
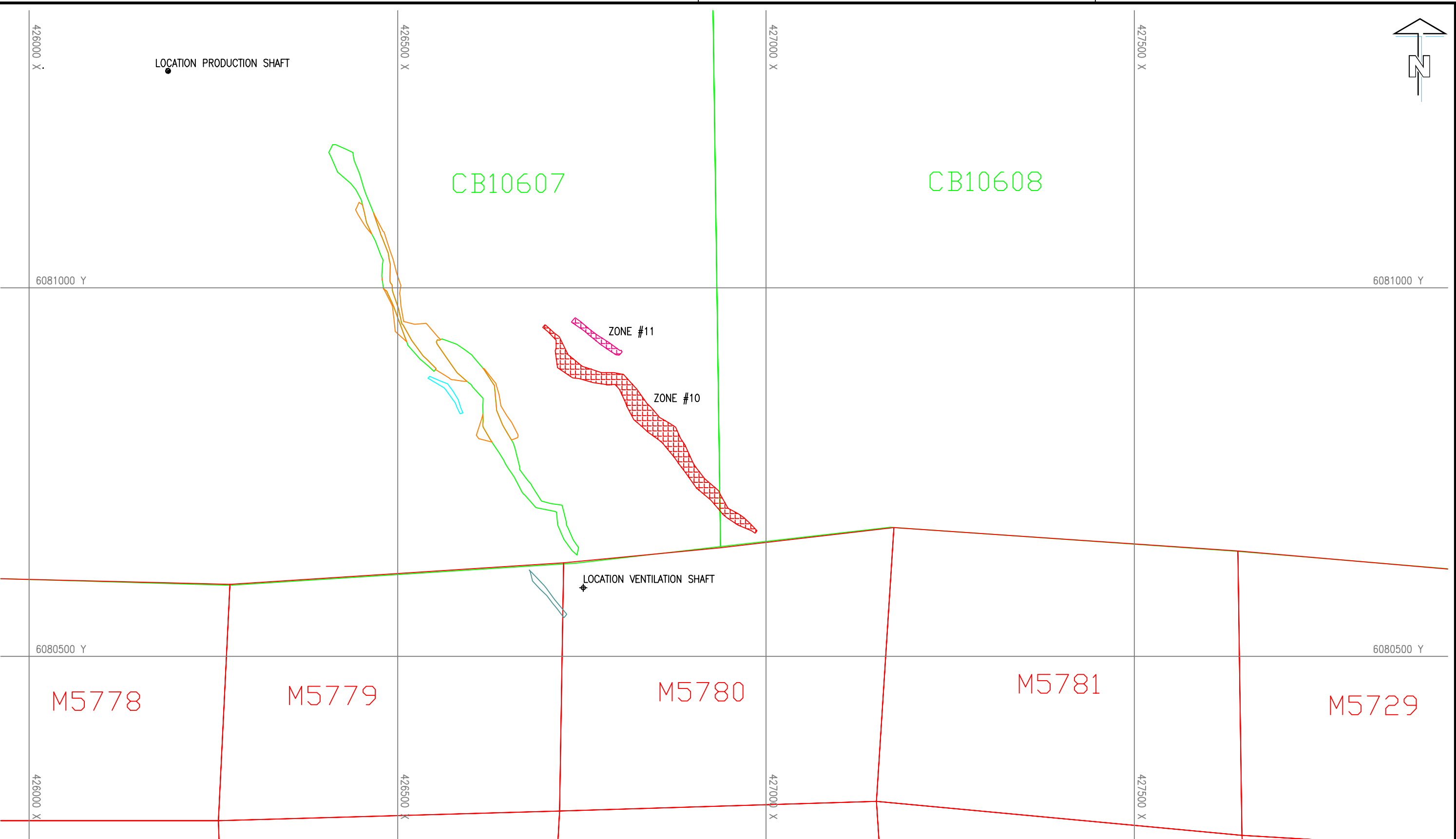
Hudson Bay Mining and Smelting Co., Limited  
Lalor Mine Environment Act Proposal

Lalor Mine and  
Mineral Claims and Mineral Leases  
Figure - 05



ISS/REV: 0A  
AECOM FILE NAME: 60212403-02-H-F21-R0X.dwg  
Saved By: cloustonec  
PLOT: 12/04/09 2:47:33 PM  
B SIZE 11" x 17" (279.4mm x 431.8mm)

This drawing has been prepared for the use of AECOM's client and may not be used, reproduced or relied upon by third parties, except as agreed by AECOM and its client, as required by law or for use by governmental reviewing agencies. AECOM accepts no responsibility, and denies any liability whatsoever, to any party that modifies this drawing without AECOM's express written consent. Do not scale this document. All measurements must be obtained from stated dimensions.



Hudson Bay Mining and Smelting Co., Limited  
Lalor Mine Environment Act Proposal

### Mineral Claims and Mineral Leases - Detail



Figure - 5A