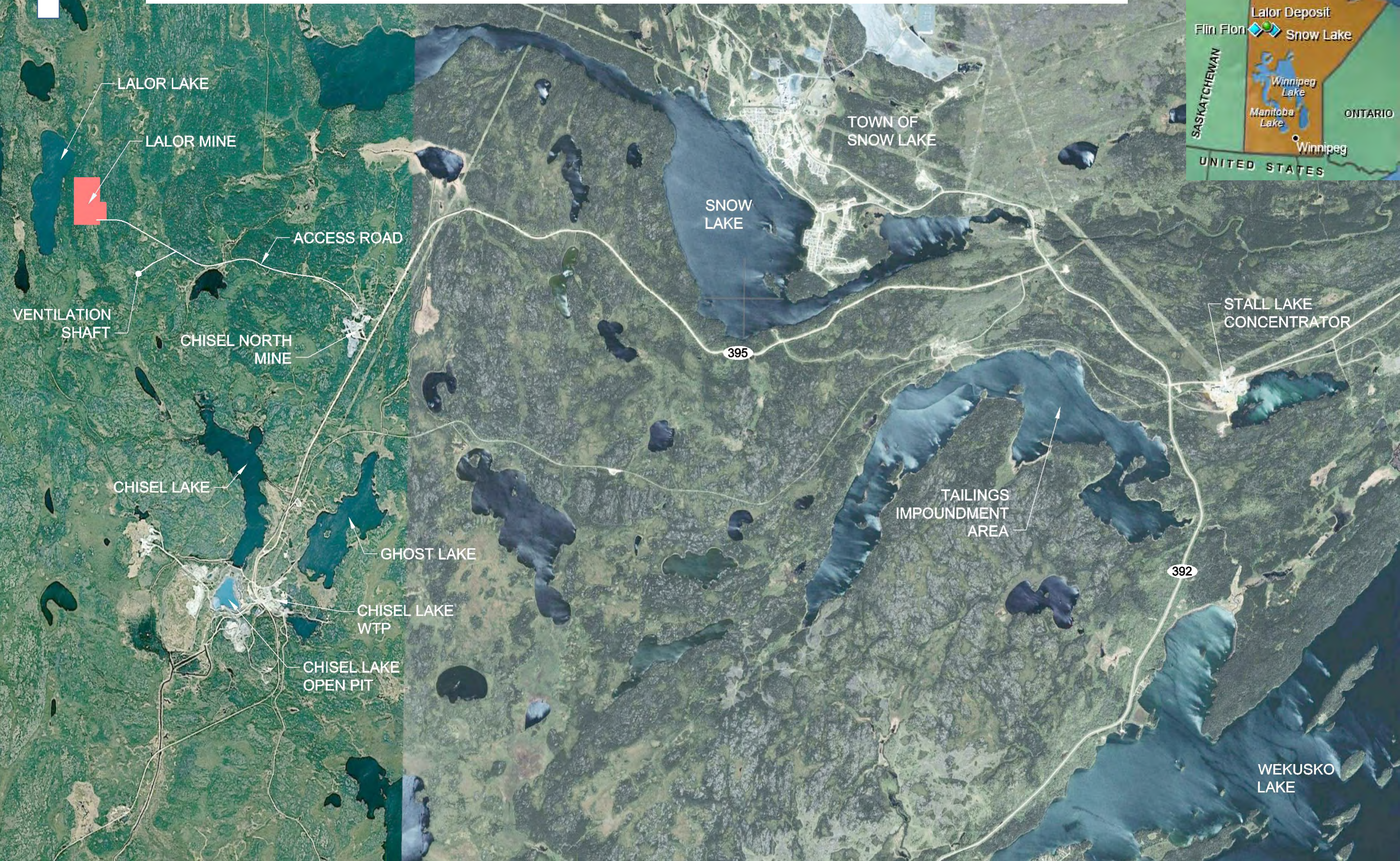


Project Components

1. Mine and Concentrator
(New)
2. Snow Lake Pumphouse
(Existing)
3. Tailings, Re-Cycle and Freshwater Pipelines
(New)
4. Realignment of PR 392
(MIT Project)
5. Anderson TIA
(Existing)



Location of Support Facilities



LALOR LAKE

LALOR MINE

ACCESS ROAD

VENTILATION
SHAFT

CHISEL NORTH
MINE

CHISEL LAKE

GHOST LAKE

CHISEL LAKE
WTP

CHISEL LAKE
OPEN PIT

TOWN OF
SNOW LAKE

SNOW
LAKE

395

TAILINGS
IMPOUNDMENT
AREA

STALL LAKE
CONCENTRATOR

392

WEKUSKO
LAKE

Tailings / Freshwater Pipeline Route



Anderson TIA

- Anderson Tailings Impoundment Area (TIA) has been used since 1979.

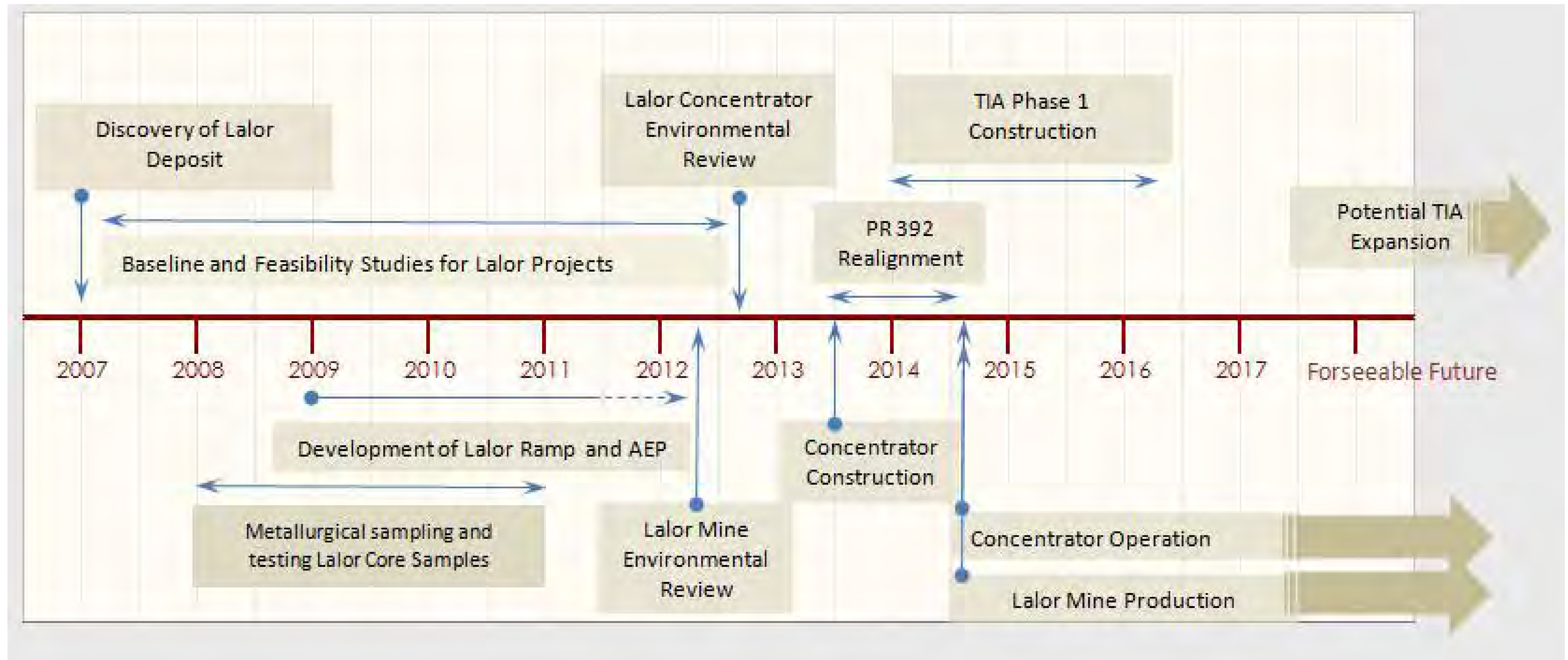


Anderson TIA

Anderson TIA – New Dam Alignments



Lalor Projects - History and Timeline

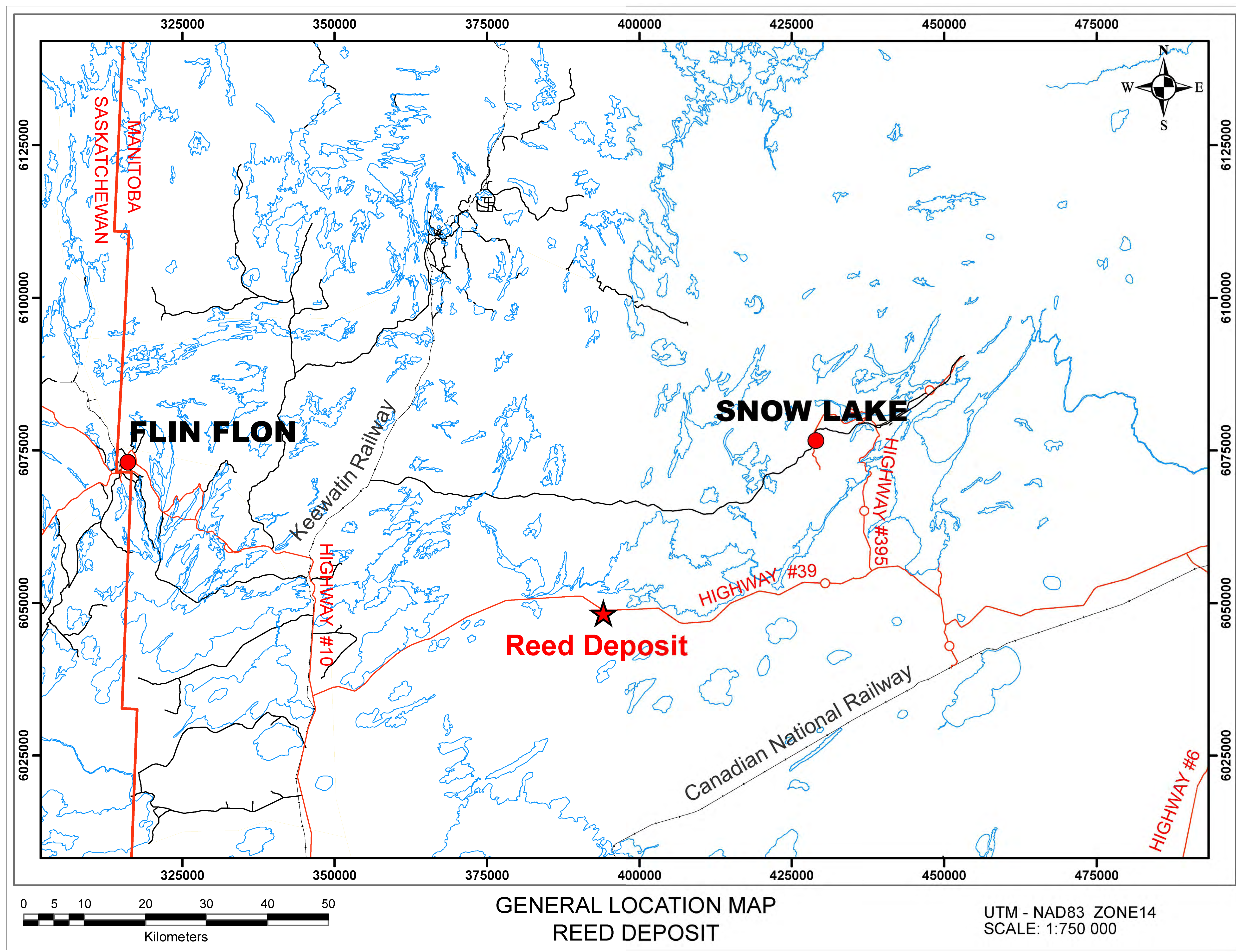


Reed Copper Project



Reed Mine

- 2.16 million tonnes of copper ore
- At full production mining rate is anticipated to be 1,300 tonnes/day
- All ore will be trucked and processed in Flin Flon
- Approximate 5 year mine life (starting in 2013)
- Will provide 88 jobs at full production



GENERAL LOCATION MAP
REED DEPOSIT

UTM - NAD83 ZONE14
SCALE: 1:750 000

Reed AEP Site, Looking East (2012)



Access Road

Office/Change house

Polishing Pond

Cold Storage

Trench